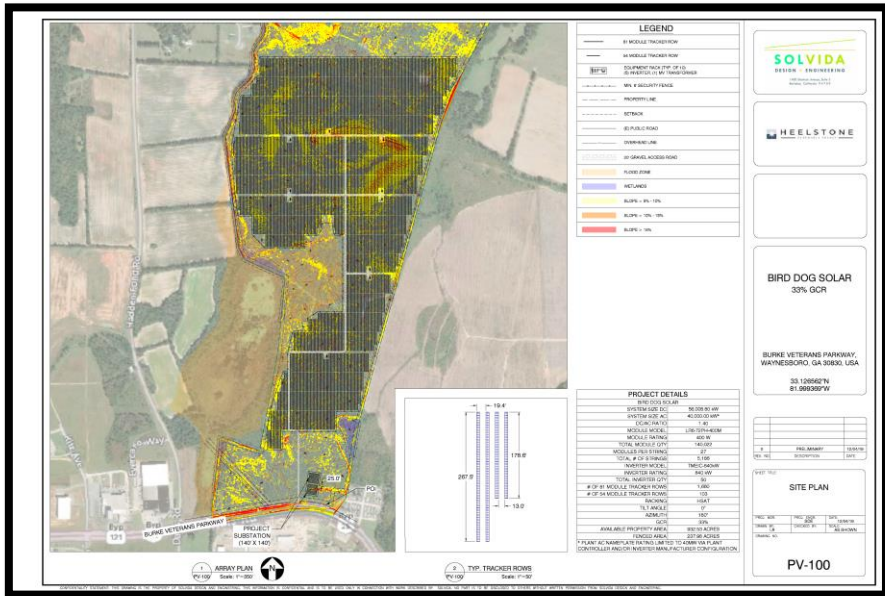




BIRD DOG SOLAR, LLC

40 MW AC / 56 MW DC



Overview

Location	Burke County, GA
IX Utility	SCS/GPC
PPA Utility	Georgia Power
Est. Yr 1 Prod.	104,515 MWh

Project Schedule

Site Control	Secured 2/18/2019
Interconnection	FacS finalized 10/3/2019
Zoning	Q1 2020
NTP	Q1 2020
COD	Q4 2021

Interconnection Costs

Interconnection Facilities	\$1,540,000
Network Upgrades	\$1,570,000
Affected Systems ¹	\$1,046,520
	<hr/>
	\$4,156,520

Site Control

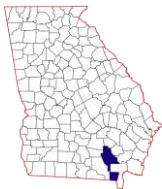
Acreage	893 Acres
Base Term	20 Years
Extension Options	4 x 5 Year Extensions

Development Expenses

Spend To-Date ²	\$393,524
----------------------------	-----------

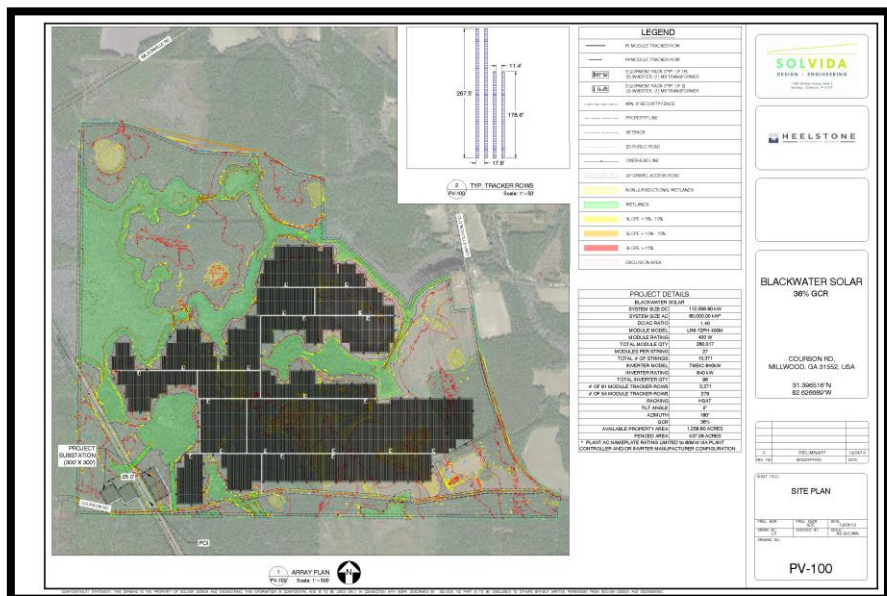
¹ Affected Systems include DESC, GTC and MEAG

² Exclusive of corporate overhead allocation



BLACKWATER SOLAR, LLC

80 MW AC / 112 MW DC



Overview

Location	Ware County, GA
IX Utility	SCS/GPC
PPA Utility	Georgia Power
Est. Yr 1 Prod.	204,248 MWh

Project Schedule

Site Control	Secured 8/21/2018
Interconnection	FacS finalized 10/3/2019
Zoning	Approved 5/8/2019
NTP	Q1 2020
COD	Q4 2021

Interconnection Costs

Interconnection Facilities	\$1,000,000
Network Upgrades	\$5,075,000
Affected Systems ¹	\$950,000
	\$7,025,000

Site Control

Acreage	1,242 Acres
Base Term	20 Years
Extension Options	4 x 5 Year Extensions

Development Expenses

Spend To-Date ²	\$568,175
----------------------------	-----------

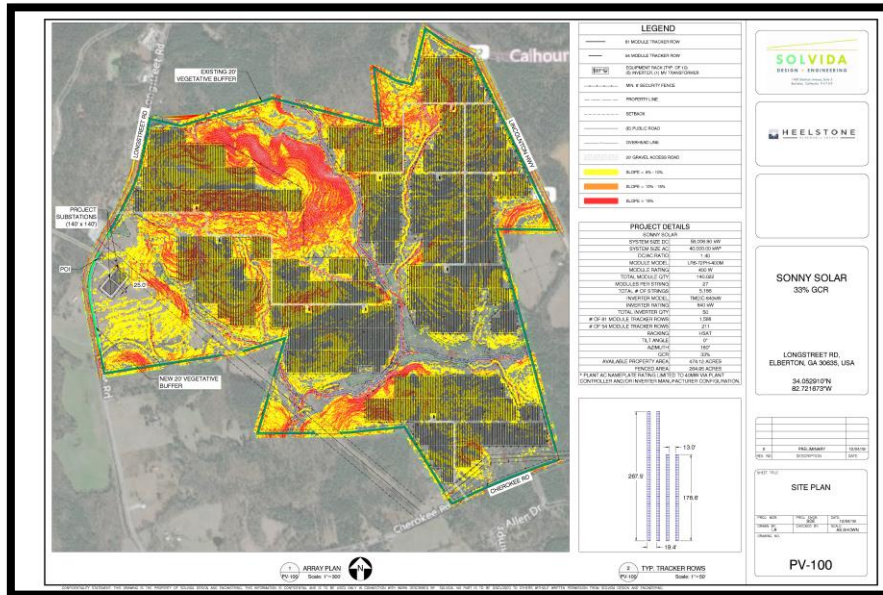
¹ Affected Systems include GTC

² Exclusive of corporate overhead allocation



SONNY SOLAR, LLC

40 MW AC / 56 MW DC



Overview

Location	Elbert County, GA
IX Utility	SCS/GPC
PPA Utility	Georgia Power
Est. Yr 1 Prod.	102,131 MWh

Project Schedule

Site Control	Secured 10/12/2018
Interconnection	FacS finalized 10/3/2019
Zoning	CUP approved 10/15/2019
NTP	Q1 2020
COD	Q4 2021

Interconnection Costs

Interconnection Facilities	\$1,555,000
Network Upgrades	\$1,400,000
Affected Systems ¹	\$0
	<hr/>
	\$2,955,000

Site Control

Acreage	474.19 Acres
Base Term	20 Years
Extension Options	4 x 5 Year Extensions

Development Expenses

Spend To-Date ²	\$399,820
----------------------------	-----------

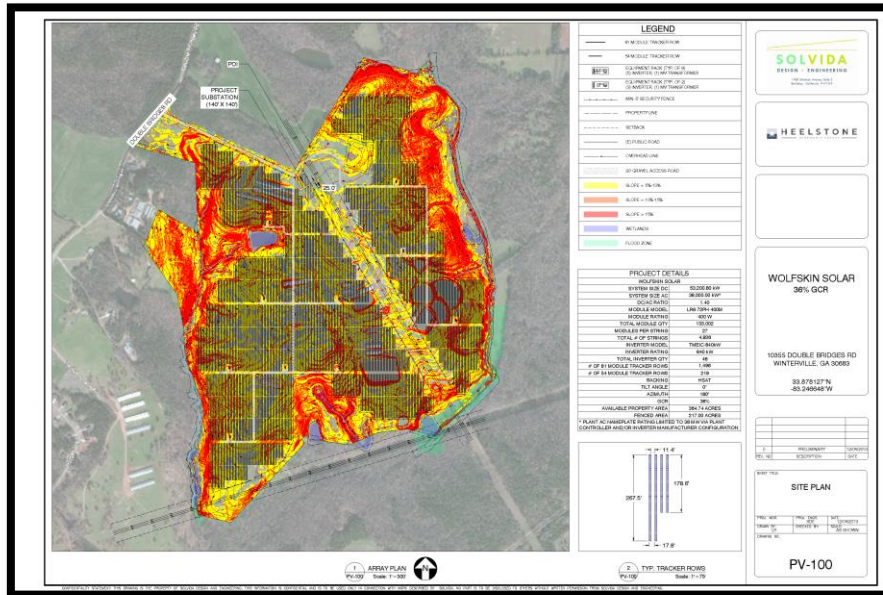
¹ Affected Systems include DESC, GTC, MEAG, and USACE

² Exclusive of corporate overhead allocation



WOLFSKIN SOLAR, LLC

38 MW AC / 53 MW DC



Overview

Location	Oglethorpe County, GA
IX Utility	SCS/GPC
PPA Utility	Georgia Power
Est. Yr 1 Prod.	96,778 MWh

Project Schedule

Site Control	Secured 1/8/2019
Interconnection	FacS finalized 10/3/2019
Zoning	CUP approved 10/18/2019
NTP	Q1 2020
COD	Q4 2021

Interconnection Costs

Interconnection Facilities	\$1,555,000
Network Upgrades	\$1,620,000
Affected Systems ¹	\$1,486,884
	<hr/>
	\$4,661,884

Site Control

Acreage	380 Acres
Base Term	20 Years
Extension Options	5 x 5 Year Extensions

Development Expenses

Spend To-Date ²	\$432,137
----------------------------	-----------

¹ Affected Systems include GTC and MEAG

² Exclusive of corporate overhead allocation